

WESERO

MANUFACTURER OF CUSTOM ALUMINUM CLEANING MACHINES

ALUMINUM SURFACE CLEANING & FINISHING

ZERO
DISCHARGE



CLEAN STRIP
LESS THAN
15 mg/m²
RESIDUALS



NO
CHEMICALS



SPILL
CONTAINMENT



THE ONLY PROCESS TECHNOLOGY MANUFACTURER ABLE TO
CLEAN ALUMINUM WITH AN EXCLUSIVE
HOT WATER AND HIGH PRESSURE CLEANING SYSTEM
THAT IS ENVIRONMENTALLY FRIENDLY
USING THE LATEST FILTRATION TECHNOLOGY

WWW.WESERO.COM

Wesero ALUMINUM

COIL STRIP & SHEET SURFACE CLEANING & FINISHING

OUR TEAM IS THE WORLD'S LEADING MANUFACTURER OF FERROUS & NON-FERROUS SURFACE TREATMENT & FINISHING PROCESS MACHINES FOR COIL AND PLATE ALUMINUM.

WE HAVE DEVELOPED A PROCESS TO CLEAN ALUMINUM USING ONLY WATER AS A MEDIUM THROUGH YEARS OF RESEARCH & DEVELOPMENT TO PROVIDE AN OPTIMUM SOLUTION

FOOT PRINT

3-5 METERS IN LENGTH

WIDTH DEPENDS ON CUSTOMERS MATERIAL

- 1) CLEAN AND DEGREASE WITHOUT CHEMICAL ADDITIVES
- 2) ZERO DISCHARGE
- 3) REMOVE OIL AND SMUT FROM THE CLEANING MEDIUM AND RECYCLE THE MEDIUM
- 4) SPILL CONTAINMENT
- 5) SMALL FOOT PRINT- SUITABLE FOR EASY LINE RETROFIT



TYPE "HWHP"

TYPICAL LINE PARAMETERS

STRIP WIDTH	100-2100mm
STRIP THICKNESS	0.1- 8 mm
LINE SPEED	1-500 meters per min.

REDUCE STRIP CLEANING COST UP TO 60%

TYPICAL PERFORMANCE CLEANLINESS

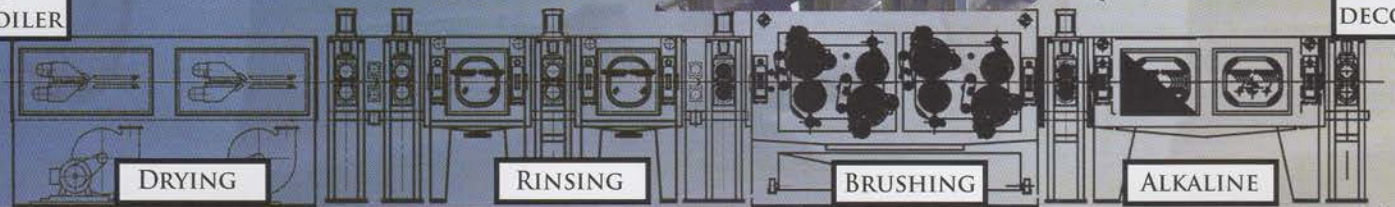
- HWHP	10-20 mg/m ² Residuals
WHEN AUGMENTED WITH NON-ABRASIVE BRUSHING	
- HWHP + BRUSHING	5-15 mg/m Residuals

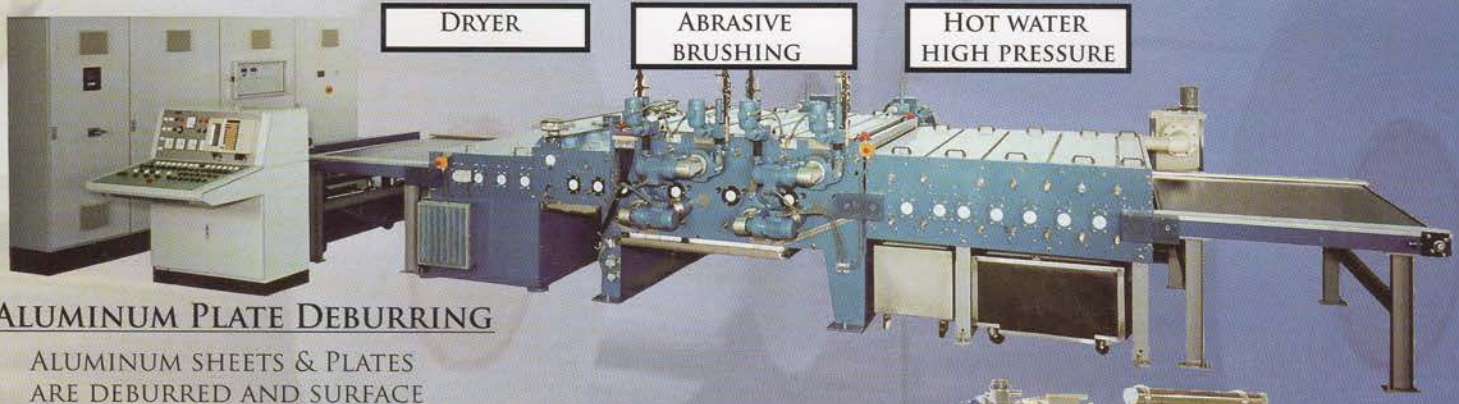
THE ALKALINE PROCESS INVOLVES AN ALKALINE SPRAY TANK, FOLLOWED BY A BRUSHING UNIT BEFORE ENTERING THE FINAL RINSE STAGES. A FILTERING SYSTEM EFFECTIVELY REMOVES OIL AND SMUT FROM THE WATER AND IS REHEATED AND RECYCLED



TO UP-COILER

FROM DECOILER





DRYER

ABRASIVE BRUSHING

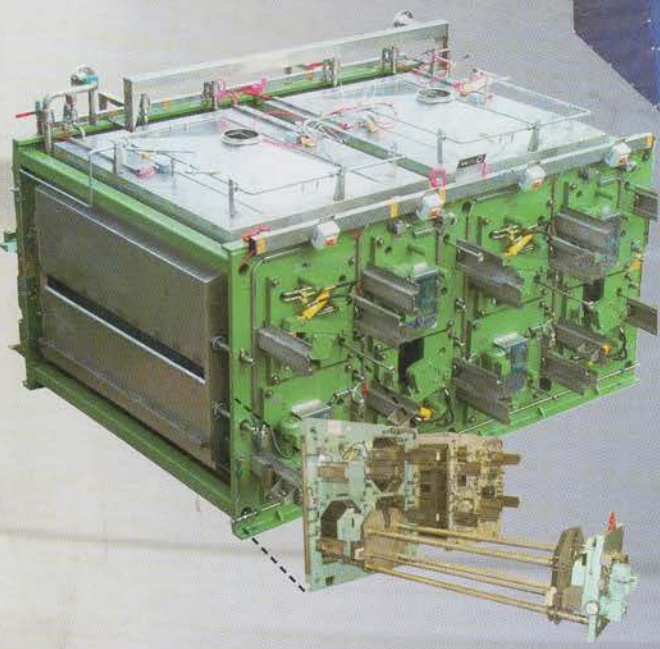
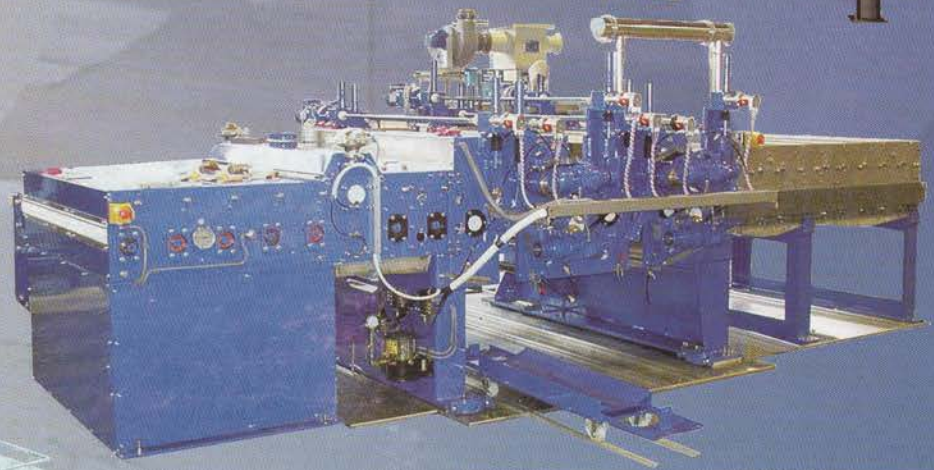
HOT WATER HIGH PRESSURE

ALUMINUM PLATE DEBURRING

ALUMINUM SHEETS & PLATES ARE DEBURRED AND SURFACE FINISHED ON A TYPE "PB" ABRASIVE BRUSH SYSTEM

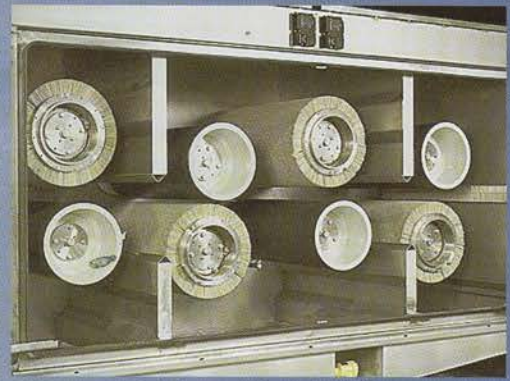
ALUMINUM SHEET DEBURRING

FLAT ALUMINUM PARTS FOR THE AIRCRAFT INDUSTRY



BRUSH MACHINES TYPE "BM"

WITH QUICK CHANGE BRUSH & BACK-UP ROLL FEATURE FOR HIGH PRODUCTION, CONTINUOUS PROCESS-LINES



TYPE "FL-750"

HEAVY DUTY CONSTRUCTION & SEPARATED DRIVE MOTORS STAND ENSURES NO VIBRATION OF THE CANTILEVER DESIGN FOR ABRASIVE OR NON-ABRASIVE BRUSHING

TYPE "FBF"



BALANCED FILTRATION SYSTEMS

- SYSTEM REMOVES SURFACE DIRT PARTICLES & SUSPENDED FORMS OF OIL.
- WATER FILTERED AND RECIRCULATED CONTINUOUSLY THROUGH THE SYSTEM CREATING NO WASTE WATER
- SELF CLEANING SYSTEM DESIGNED INSIDE THE TANK TO AVOID THE BUILD UP OF COLLECTED DIRT

TYPE "NGF"



HIGH EFFICIENT STRIP DRYERS

- SOUND & HEAT INSULATED STEEL FRAME
- SPECIAL DESIGN OF AIR KNIVES PRODUCE CONSISTANT RESULTS IN DIFFRENT STRIP WIDTH & THICKNESSES
- DO NOT REQUIRE ADDITIONAL HEAT ELEMENTS TO DRY STRIP SURFACE



WESERO HIGHTEC IS HEADQUARTERED IN THE RUHR REGION OF GERMANY- THE AREA KNOWN FOR HAVING COMPANIES AT THE FORE-FRONT OF TECHNICAL INNOVATION.

FOUNDED IN 1948, WESERO HAS BEEN DESIGNING PROCESS TECHNOLOGY MACHINES FOR OVER 50 YEARS.



TAKE THE WESERO CHALLENGE

SEND US A SAMPLE OF YOUR MATERIAL WITH YOUR OPERATING CONDITIONS AND REQUIREMENTS. WE WILL DEVELOP IN OUR LAB, AN OPTIMUM RECOMMENDATION TO CONSISTENTLY CLEAN YOUR MATERIAL

WORLD-WIDE



SOME OF OUR PARTNERS IN THE ALUMINUM INDUSTRY INCLUDE:

ALCOA
ALCAN
HYDRO ALUMINUM
BOEING
AIRBUS

AGENTS & DISTRIBUTERS



PLEASE CONTACT US

TEL:
+ 49 (0) 23 24 703-0

FAX:
+49 (0) 23 24 703-30

E-MAIL:
INFO@WESERO .COM

ADDRESS:
AM LEVELOH 28
D-45549, SROCKHOVEL
GERMANY

FOR MORE INFORMATION
VISIT OUR WEBSITE:

WWW.WESERO.COM

